

**RF & Microwave Components and Systems Business**



**SPECTRUM  
MICROWAVE**  
A Salsbury Group Business



Combining the talents of  
Amplifonix, Q-Bit, EMF, Magnum, Radian, FSY,  
Salsbury Engineering & Film Microelectronics  
into one World Class Organization

Cross Reference Guide

[Filters](#)   [Components](#)   [RF Solutions](#)   [Services](#)   [Tools](#)   [Contact Us](#)

[Search](#)

[Components](#) > [Home](#)

**QBH-125 / QBH-125B Amplifier Performance Datasheet**

# QBH-125 / QBH-125B\*

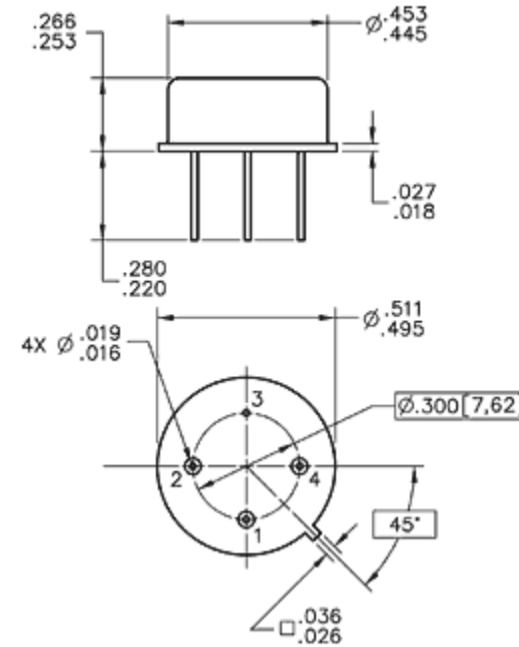
\* Part number for additional environmental screening.

**Performance Data**

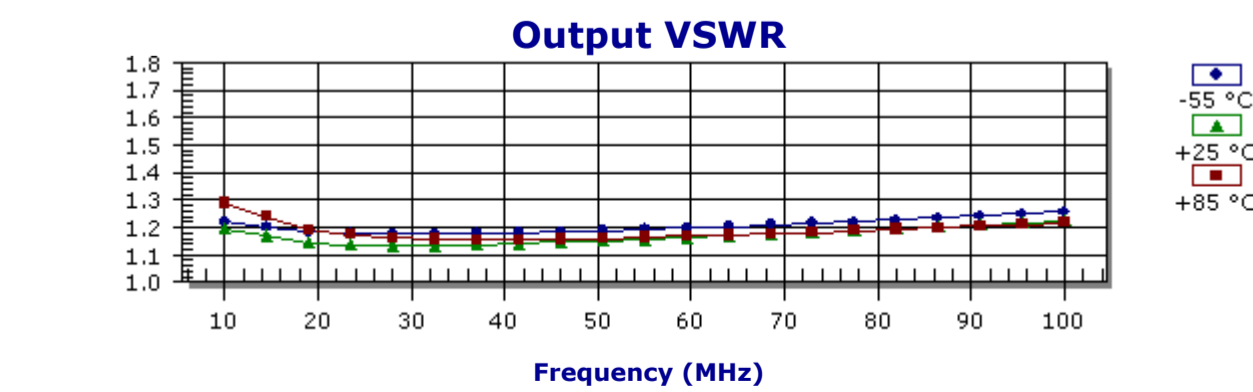
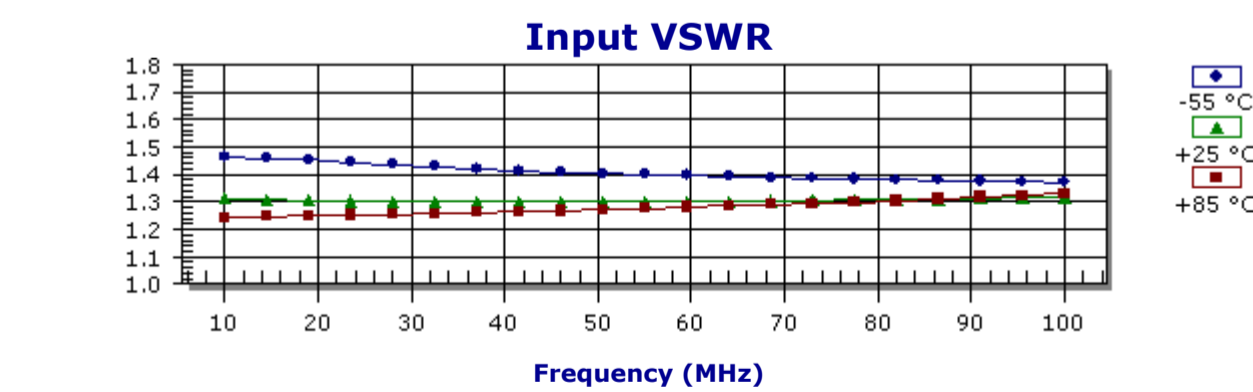
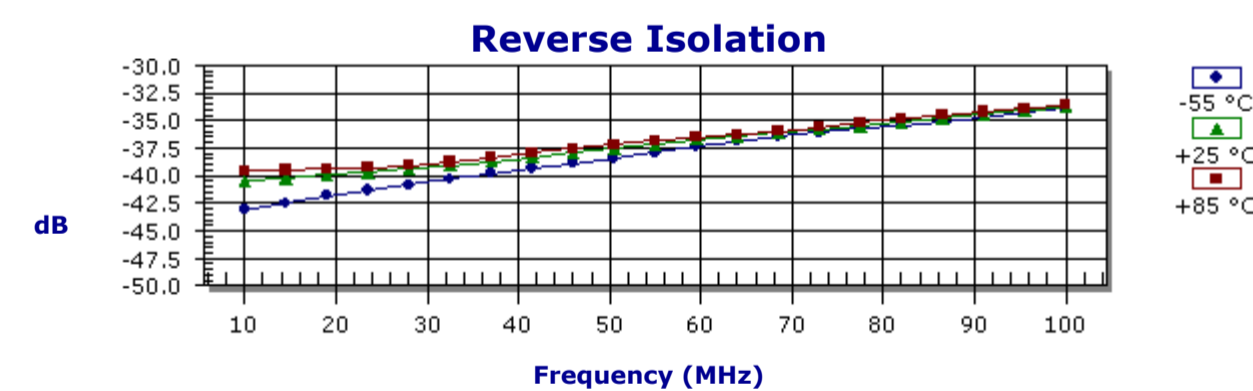
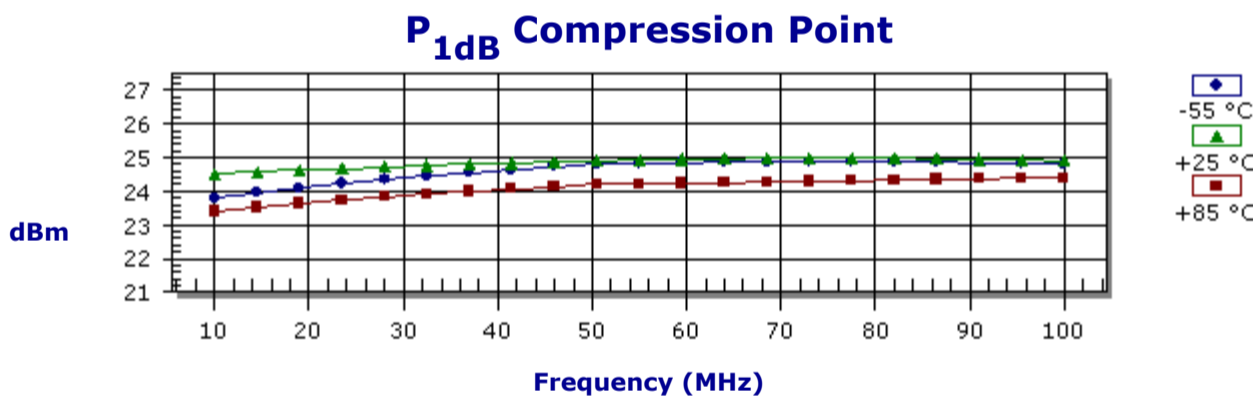
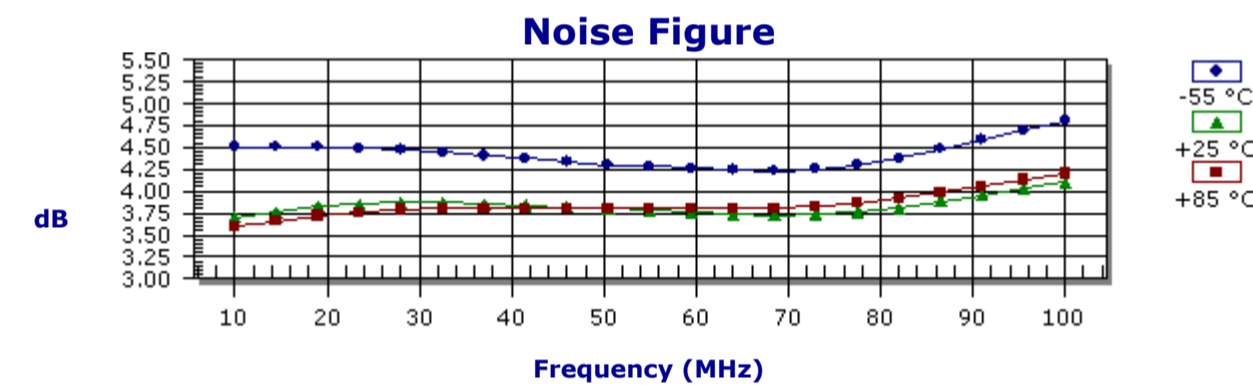
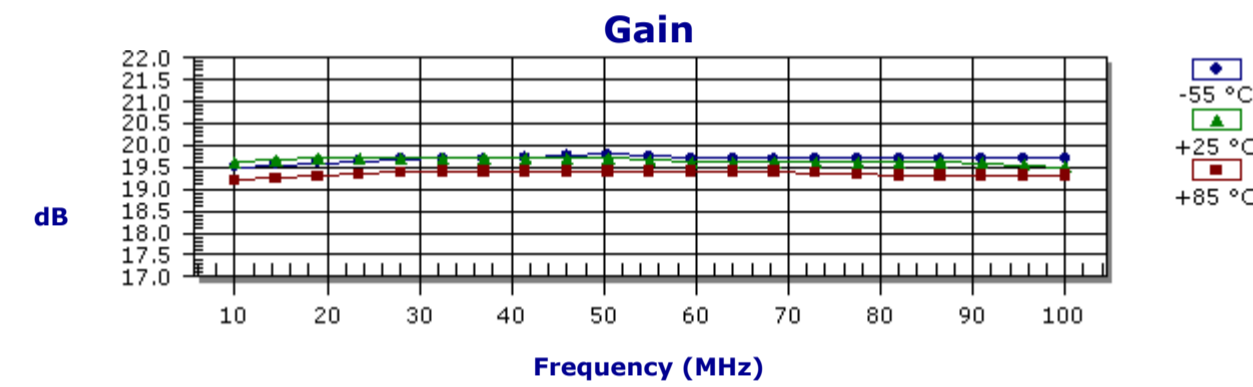
<b>Frequency</b>	10.0 - 100.0 MHz
<b>Gain</b>	19.6 dB Typical 18.6 dB Min
<b>Noise Figure</b>	4.5 dB Typical 5.0 dB Max
<b>P<sub>1dB</sub> Compression Point</b>	23.0 dBm Typical 21.0 dBm Min
<b>3<sup>rd</sup> Order Intercept</b>	38.0 dBm Typical
<b>2<sup>nd</sup> Order Intercept</b>	50.0 dBm Typical
<b>VSWR</b>	1.5/1.5 Typ/Max 1.5/1.5 Typ/Max
<b>Reverse Isolation</b>	-29.0 dB Typical -29.0 dB Min
<b>Power Supply</b>	15.0 Volts 132.0 mA
<b>Operating Temperature</b>	-55.0 - 85.0 °C

**Package Drawing**

**TO-8 Standard Package**



Note: Care should always be taken to effectively ground the case of each unit.



**Absolute Maximum Conditions**

<b>Maximum Operating Temperature</b>	-55.0 - 125.0 °C	<b>Maximum Storage Temperature</b>	-65.0 - 150.0 °C
<b>Maximum Case Temperature</b>	150.0 °C	<b>Maximum Supply Voltage</b>	16.5 Volts
<b>Continuous RF Input Power</b>	14.6 dBm	<b>Short Term RF Input Power (1 minute max)</b>	0.0 mW
<b>Maximum Peak Power (3 μsec max)</b>	0.0 W		

Spectrum Microwave reserves the right to make revisions to both the product and/or the information contained within these datasheets without advanced notice.

[Home](#) | [About Us](#) | [Contact Us](#) | [Partners](#) | [Corporate Site](#) | [Privacy Policy](#) | [Terms & Conditions](#)

Spectrum Advanced  
Specialty Products

Spectrum Sensors  
& Controls

Spectrum Microwave  
Components & Systems

Spectrum Power  
Management Systems

**Spectrum Microwave, Inc.**

Phone: 888-553-7531 · Fax: 888-553-7532  
Copyright © 2008 Spectrum Control Inc. All Rights Reserved

