

ZONE	REV	DESCRIPTION	DATE	BY
-	G	ECO 11721	06/27/00	IMG
-	H	ECO 12860	03/02/01	HDB
-	J	ECO 13666	09.11.01	P.MAQ

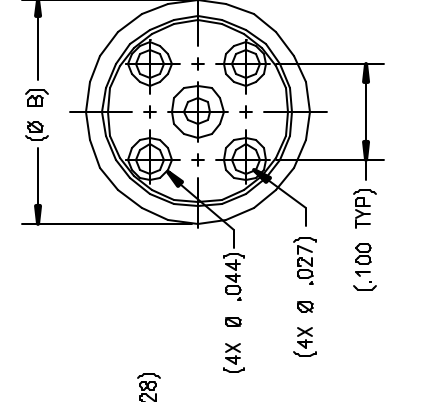


FIG. 1

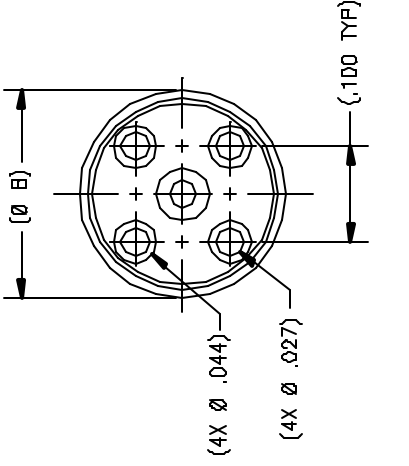


FIG. 2

P/N	APPLICABLE NOTE(S)	INTERFACE(S)	(Ø A)	(Ø B)	(C)	FIG.
-1CC	1,2,3	LIMITED DETENT	.120	(.218)	.079	2
-2CC	1,2,3	FULL DETENT	.116	(.218)	.079	2
-3CC	1,2,3	SMOOTH BORE	.125	(.218)	.079	2
-4CC	1,2,3	CATCHERS MITT	.125	(.235)	.079	1
-5CC	1,2,3	FULL DETENT	.116	(.218)	.100	2
-6CC	1,2,3	LIMITED DETENT	.120	(.218)	.100	2
-7CC	1,2,3	SMOOTH BORE	.125	(.218)	.100	2
-8CC	1,2,3	CATCHERS MITT	.125	(.235)	.100	1
-9CC	1,2,3	FULL DETENT	.116	(.218)	.140	2
-10CC	1,2,3	LIMITED DETENT	.120	(.218)	.140	2
-11CC	1,2,3	SMOOTH BORE	.125	(.218)	.140	2
-12CC	1,2,3	CATCHERS MITT	.125	(.235)	.140	1

SMP MALE INTERFACE
PER MIL-STD-348

SMP MALE INTERFACE
PER MIL-STD-348

NOTES:

- MATERIAL(S):
 - BODY: 303 SST PER ASTM A-582.
 - CONTACT: BeCu ALLOY PER ASTM B-196.
 - INSERT: BRASS ALLOY PER ASTM B-16.
 - INSULATOR: PTFE PER ASTM D-171D.
- FINISH(ES):
 - BODY: PASSIVATE PER ASTM A-967.
 - INSERT & CONTACT: GOLD PLATE PER ASTM B-488 OVER NICKEL PLATE PER AMS-QQ-N-280.
 - INSULATOR: NONE.
- ELECTRICAL PERFORMANCE(S):
 - FREQUENCY RANGE: DC-12.0 GHZ.
 - R.F. INSERTION LOSS: 0.1dB MAX TO 12.0 GHZ.
 - VSWR: 1.35:1 MAX TO 12.0 GHZ.

RECOMMENDED MOUNTING HOLE PATTERN

APPLICABLE TENSQITE DOCUMENTS		TOLERANCES AND NOTES		SEE NOTE(S)	
WORK STD	FREQ. INST	ASSY. INT	EXCEPT AS NOTED	GENERAL	PRECISION
NA	NA	NA	DIMENSIONS ARE IN INCHES UNLESS OTHERWISE SPECIFIED LINEAR SIZE TOLERANCES ± 1/20 ANGULAR ± 1/2°		
NOTICE			HIGH PERFORMANCE CABLES & INTERCONNECT SYSTEMS Lafayette Research, California 90015		
THE PRIMARY DESIGN IS BY TENSQITE. TENSQITE ASSUMES NO LIABILITY FOR THE USE OF THIS DRAWING IN ANY APPLICATION. THE USER SHALL BE RESPONSIBLE FOR THE PROPER USE OF THIS DRAWING. TENSQITE SHALL NOT BE RESPONSIBLE FOR THE PROPER USE OF THIS DRAWING. TENSQITE SHALL NOT BE RESPONSIBLE FOR THE PROPER USE OF THIS DRAWING.			SMP MALE PCB MOUNT TO Ø .028 STRAIGHT TERMINATION		
TITLE			SMP MALE PCB MOUNT TO Ø .028 STRAIGHT TERMINATION		
DRAWN BY			BRD 12/07/93		
CHECKED BY			P.MAQ 09.11.01		
DATE			09.11.01		
DRAWING NO.			OLPX 01P654		
SHEET			1 OF 1		
PROJECT NO.			P654		
C 50990			P654		

Tensqite

REV	DATE	BY
J	09.11.01	P.MAQ