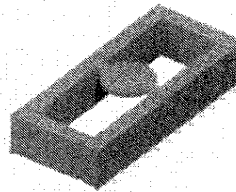
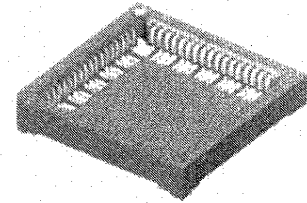


F-209 SUPPLEMENT



ICF-624-S-O



PLCC-068-F-A

SURFACE MOUNT SOCKETS ICF, PLCC SERIES

SPECIFICATIONS

For complete specifications and recommended PCB layouts see www.samtec.com?ICF

Insulator Material: Black LCP
Contact Material: BeCu
Plating: Au or Sn over 50µ" (1,27µm) Ni
Current Rating: 1A
Operating Temp Range: -55°C to +125°C
Contact Resistance: 10 mΩ Max
Insertion Depth: (2,54mm) .100" to (3,81mm) .150"
Insertion Force/Contact: 5oz (1,39N) average
Withdrawal Force/Contact: 4oz (1,11N) average
RoHS Compliant: Yes

Processing:
Max Processing Temp: 230°C for 60 seconds, or 260°C for 20 seconds 3x
Lead-Free Solderable: Yes
SMT Lead Coplanarity: .006" (0,15mm) max

ICF

ROW SPACING & NO. OF CONTACTS

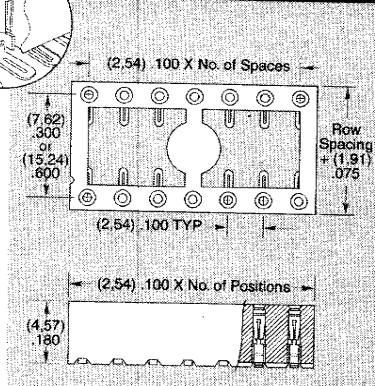
PLATING OPTION

TAIL OPTION

OTHER OPTION



Specify from chart below



"-XXX"	Row Space	No. of Contacts
-308	.300 (7,62)	08
-314		14
-316		16
-318		18
-320		20
-322		22
-324	.600 (15,24)	24
-328		28
-624		24
-628		28
-632		32
-640		40
-648	48	

-S
=30µ" (0,76µm) Gold on contact, Matte Tin on tail

-I
=Tails In

-TR
=Tape & Reel Packaging

-T
= Matte Tin

-O
=Tails Out

Note: Some sizes, styles and options are non-standard, non-returnable.

SPECIFICATIONS

For complete specifications and recommended PCB layouts see www.samtec.com?PLCC

Insulator Material: Black Liquid Crystal Polymer
Contact Material: BeCu
Plating: Au or Sn over 50µ" (1,27µm) Ni
Current Rating: 1A
Operating Temp Range: -55°C to +105°C
Contact Resistance: 10mΩ max
RoHS Compliant: Yes
Processing:
Max Processing Temp: 230°C for 60 seconds, or 260°C for 20 seconds 3x
Lead-Free Solderable: Yes
Lead Coplanarity: Less than 52 leads = .006" (0,15mm) max; 52 leads and more = .008" (0,20 mm) max

Note: Some sizes, styles and options are non-standard, non-returnable.

PLCC

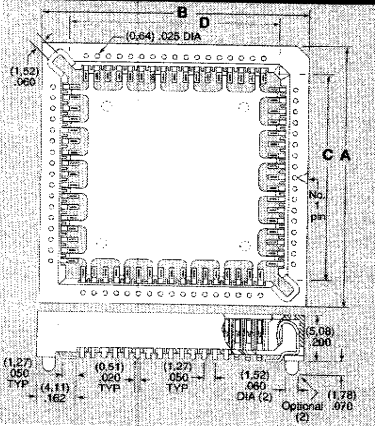
NO. OF CONTACTS

PLATING OPTION

ALIGNMENT PIN OPTION

PACKAGE OPTION

-020, -028, -032, -044, -052, -068, -084



*32 position has .040" (1,00mm) DIA x .030" (0,76mm) high standoffs in corners.

NO. OF PINS	A	B	C	D
-020	.600 (15,24)	.600 (15,24)	.370 (9,40)	.370 (9,40)
-028	.700 (17,78)	.700 (17,78)	.470 (11,94)	.470 (11,94)
-032	.800 (20,32)	.800 (20,32)	.570 (14,48)	.570 (14,48)
-044	.900 (22,86)	.900 (22,86)	.670 (17,02)	.670 (17,02)
-052	1.000 (25,40)	1.000 (25,40)	.770 (19,56)	.770 (19,56)
-068	1.200 (30,48)	1.200 (30,48)	.970 (24,64)	.970 (24,64)
-084	1.400 (35,56)	1.400 (35,56)	1.170 (29,72)	1.170 (29,72)

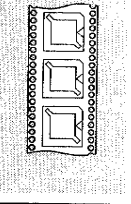
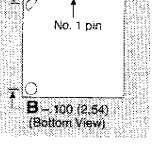
-F
=Gold flash on contact, Matte Tin on tail

-N
=No Alignment Pins

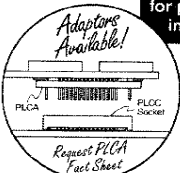
-TR
=Tape and Reel

-T
Matte Tin

-A
=Alignment Pins



Leave package option blank for packaging in a tube.



Due to technical progress, all designs, specifications and components are subject to change without notice.

WWW.SAMTEC.COM