



# TO-5 CASE RELAY SPDT

Series  
I 1MA

- Basic • Suppression • Suppression/Steering • Transistor Driven

## Product Description

A series of ultra miniature hermetically sealed relays constructed in a transistor style case, providing superior performance and established reliability characteristics. Available in a variety of sensitivities, contact configurations and hybrid versions, to provide a most versatile element to the circuit designer.

The following construction features ensure the highest reliability in extreme environments:

- All welded relay construction
- Cleaning and sealing techniques ensures maximum internal cleanliness
- Low level to 1 ampere switching
- 1 form C, SPDT contacts, special metal alloy with gold plating
- Frame design and force / mass ratio provides exceptional shock and vibration immunity

Low intercontact capacitance and contact circuit losses, provides also a reliable switching functions in demanding RF applications, combined with small size and low coil power dissipation (see figure 1).

## Series Types (note 1)

- **I1MA\*** Basic Relay, 1 form C, SPDT
- **I1MA\*D** Basic Relay combined with an internal diode for coil transient suppression
- **I1MA\*DD** Basic Relay incorporates two internal diodes for coil transient suppression and polarity reversal protection
- **I1MA\*T** Basic Relay incorporating an internal transistor driver and diode for coil transient suppression

## Environmental and Physical Specifications

<b>Temperature (Ambient)</b>	- 65°C to + 125°C
<b>Shock</b>	75 g, 6 ms.
<b>Vibration (sinusoidal)</b>	30 g, 10 to 3000 Hz
<b>Vibration (random)</b>	0,4 g <sup>2</sup> / Hz, 50 to 2000 Hz
<b>Acceleration</b>	50 g
<b>Sealing</b>	All welded, Hermetic
<b>Weight</b>	0,08 oz. (2,27 grams) max.

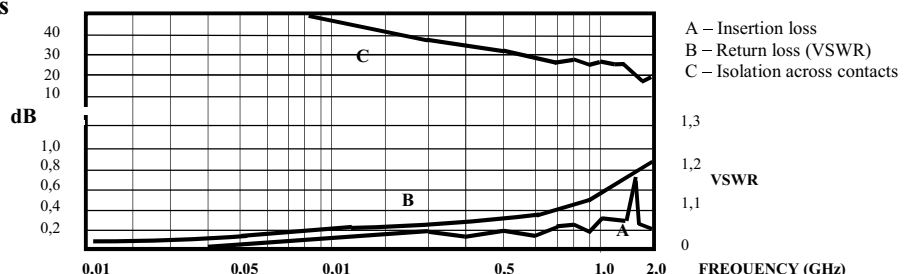


## Electrical Characteristics (over the Temperature range. Unless otherwise noted)

Coil Data	See Typical Characteristics chart		
Contact Rating	Type Load	Contact Load	Cycles min.
(Note: All ratings with grounded case)	Low Level	10 to 50 $\mu$ A / 10 to 50 mV	1.000.000
	Resistive	1 A / 28 Vdc	100.000
		250 mA / 115Vac, 60 and 400 Hz (Case not grounded)	100.000
		100 mA / 115 Vac, 60 and 400 Hz	100.000
	Resistive overload	2 A / 28 Vdc	100
	Inductive	200 mA / 28 Vdc (320 mH)	100.000
Lamp	100 mA / 28 Vdc	100.000	
<b>Contact Resistance</b>	0,1 $\Omega$ max. initial, 0,2 $\Omega$ max. after life		
<b>Operate Time</b>	2,0 ms. max.		
<b>Release Time</b>	2,0 ms. max. Series: I1MA*	4,0 ms. max. Series: I1MA*D, I1MA*DD, I1MA*T	
<b>Contact Bounce</b>	1,5 ms. max.		
<b>Contact Stabilisation Time</b>	2,0 ms. max.		
<b>Dielectric Strength</b>	500 Vrms min., 60 Hz, all points at sea level		300 Vrms min., 60 Hz, all points at 70.000 ft.
<b>Insulation Resistance</b>	10.000 M $\Omega$ min. all points at 500 Vdc		
<b>Intercontact Capacitance</b>	0,7 pF typical		
<b>Sensitivity</b>	100 mW at pick-up, 400 mW at nominal rated coil voltage, at 25 °C		
<b>Diode P.I.V.</b>	100 Vdc min. Series: I1MA*D, I1MA*DD, I1MA*T		
<b>Negative Coil Transient</b>	1,0 Vdc max. Series: I1MA*D, I1MA*DD, I1MA*T		
<b>Transistor Characteristics at 25 °C (Series I1MA*T)</b>	Emitter-Base Voltage (V <sub>ebo</sub> )		6,0 Vdc min.
	Collector-Base Breakdown Voltage (V <sub>cbo</sub> ) (I <sub>c</sub> = 10 $\mu$ A)		70 Vdc min.
	Base Turn-Off Voltage		0,3 Vdc max.

Figure 1 - Radio Frequency Curves

Note:  
Radio frequency curves are typical characteristics based on factory knowledge. Tests to ensure compliance on RF performance, are not performed.





# TO-5 CASE RELAY SPDT

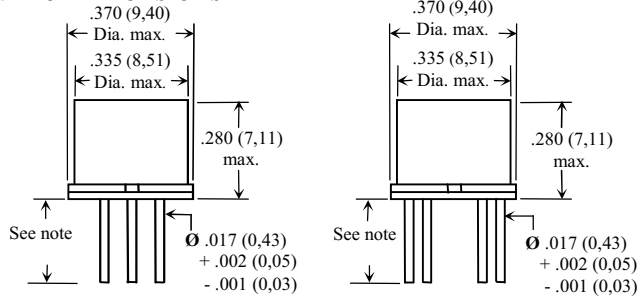
Series  
**I 1MA**

- Basic • Suppression • Suppression/Steering • Transistor Driven

## Typical Characteristics (over the Temperature range. Unless otherwise noted)

Description	Meas.	Series Types		Coil Voltage Code					
				5	6	9	12	18	26
Coil Voltage	Vdc	I1MA*, I1MA*D, I1MA*DD, I1MA*T	Nom.	5,0	6,0	9,0	12,0	18,0	26,5
			Max.	5,8	8,0	12,0	16,0	24,0	32,0
Coil Resistance at 25°C	Ω	I1MA*, I1MA*D, I1MA*T	±10 %	63	125	280	500	1130	2000
				50	98				
Coil Current at 25°C	mAdc	I1MA*DD	Min.	72,7	46,3	25,9	20,0	13,6	11,5
			Max.	100	62,4	33,7	25,6	17,2	14,4
		I1MA*T	Min.	66,6	42,0	28,0	20,9	13,8	11,5
			Max.	89,6	55,5	38,1	28,1	18,8	15,5
Pick-up Voltage	Vdc	I1MA*, I1MA*D	Max.	3,7	4,5	7,8	10,0	14,5	19,0
		I1MA*DD	Max.	4,5	5,5				
		I1MA*T	Max.	3,9	5,2				
Drop-Out Voltage	Vdc	I1MA*, I1MA*D, I1MA*DD, I1MA*T	Min.	0,15	0,18	0,35	0,40	0,58	0,89
			Max.	2,4	2,8	4,2	5,6	8,4	10,4
Base Current to Turn-on	mAdc	I1MA*T (limit for base / emitter current to 15 mA max.)	Min.	2,38	1,60	1,07	0,80	0,53	0,40

### Outline Dimensions

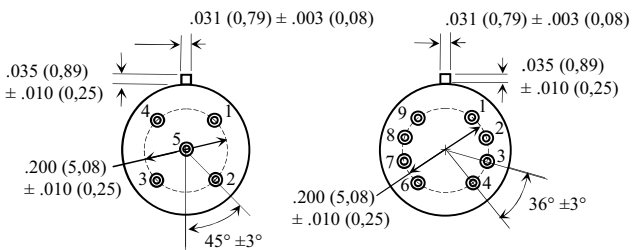


Note:

- Dimensions are shown in inches (millimetres)
- Terminal Variants: - (C) Standard Wire Terminal = .500 (12,7) min, - (W) Long Wire Terminal = 1.500 (38,1) min, - (P) Pin Terminal = .187 ± .010 (4,75 ± 0,25)

### Terminal Locations

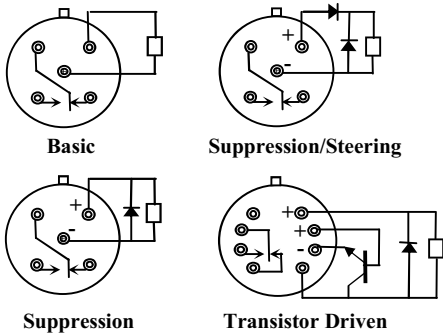
#### Basic and Suppressed Transistor Driven



Note:

- Dimensions are shown in inches (millimetres)
- Viewed from terminals, numbers are for reference only

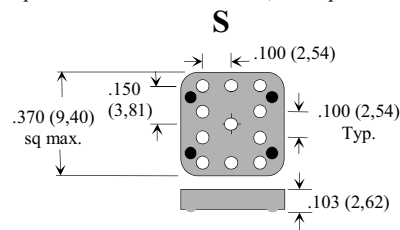
### Schematic Diagrams



Note: Schematics are viewed from terminals

### Spreader Pads

Relays can be supplied with a spreader pad epoxied to the relay header, to prevent the possible shorting of printed circuit board land lines and to facilitate circuit board cleaning. To order relay with pad add. "S" to Part Number, Example: **I1MAWD - 26S**



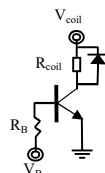
Note:

- Dimensions are in inches (millimetres)
- Pad Type S is used on series: I1MA\*, I1MA\*D, I1MA\*DD, I1MA\*T

### Note:

- "\*" Indicates Terminal Variants: C, P or W
- Failure Rate (Reliability Level)
- Tr ON:  $I_b = 0,4$  to  $2,38$  mA, Tr OFF:  $V_B = 0,3$  Vdc max.

$$R_B = \frac{V_B - 0,7}{I_{Bsat}} \quad I_{Bsat} = \frac{V_{coil} - 0,4}{5R_{coil}}$$



Military Suffix	Hi-G Italia Suffix	FR % / 10.000 cycles
L	A	3,0
M	B	1,0

### How to Order, (Part Numbering System)

